

Critical Cover[®]

Protective Apparel & Accessories

Dedicated to the protection of
people, products and environments™

AlphaProTech
INCORPORATED

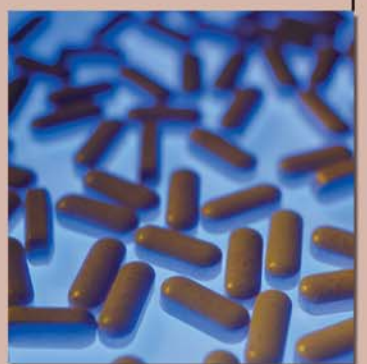


Table of Contents

Facemasks & Shields

| | |
|---|------------|
| PFL [®] Masks | Page 4 - 5 |
| CoolOne [™] Masks | Page 6 |
| AlphaAir [®] Masks | Page 7 |
| ShieldMate [™] Mask with Eye Shield | Page 7 |
| ShieldMate [™] Mask with Extended Shield | Page 8 |
| Coverall [®] Face Shields | Page 8 |

Apparel

| | |
|-------------------------------|--------------|
| AlphaGuard [®] | Page 9 - 10 |
| GenPro [®] | Page 11 - 12 |

Shoe & Boot Covers

| | |
|-----------------------------|--------------|
| AquaTrak [®] | Page 13 |
| SureGrip [™] | Page 13 |
| CPE | Page 14 |
| GenPro [®] | Page 14 - 15 |

| | |
|--------------------------------|---------|
| Seam Construction | Page 16 |
|--------------------------------|---------|

| | |
|--------------------------------|---------|
| Apparel Packaging | Page 16 |
|--------------------------------|---------|

| | |
|---------------------------------|---------|
| Facemask Packaging | Page 17 |
|---------------------------------|---------|

| | |
|---------------------------|---------|
| Sizing Chart | Page 17 |
|---------------------------|---------|

| | |
|------------------------------------|---------|
| Performance Test Data | Page 18 |
|------------------------------------|---------|

Critical Cover[®] Protective Apparel & Accessories

Protective Solutions for Healthcare Professionals

Alpha Pro Tech is a leading designer and manufacturer of disposable protective apparel for the healthcare professional. We are dedicated to producing the highest quality products and maintaining a leadership position in product development and design. Alpha Pro Tech is committed to offering customers the most innovative products possible. The depth of our design and manufacturing capabilities allows us to quickly create traditional and custom products to meet the evolving market requirements.

Innovation is at the forefront of all of the company's efforts. Alpha Pro Tech is always seeking new and better ways to do things in every area of its business...from product design and prototyping to manufacturing, quality control and customer service.



Critical Cover[®] Protective Apparel & Accessories

Alpha Pro Tech Facemasks & Shields

Alpha Pro Tech designs and manufactures a wide range of protective Facemasks and Face Shields for Healthcare Professionals in the Laboratory, Cleanroom and light Industrial markets. With a variety protective products and configurations, we have just the right one for your specific environment and/or application.

Many of the Facemasks incorporate Alpha Pro Tech's patented and integrated Magic Arch[™] and PFL[®] (Positive Facial Lock[®]) feature that enhance user comfort and product performance.

PFL[®] Masks

Breathe Easier and Safer

Features & Benefits: The innovative and patented Positive Facial Lock[®] (PFL[®]) feature utilizes our exclusive Twist-Seal[®] technology that allows the user to create a custom fit each and everytime. This unique feature significantly reduces the possibility of the user inhaling airborne contaminants and creates a positive seal to a variety of facial sizes and features. Additionally, the integrated Magic Arch[™] prevents the mask from coming in contact with the user's nose and mouth thereby making it easier to breathe while enhancing filtration efficiency. The hypoallergenic materials used in the PFL masks create a durable exterior and a soft, comfortable interior.

| Performance | Test Performed | Result (Average) |
|--|---------------------------------------|---|
| | Differential Pressure per MIL-M36954C | 2.3 mm H ₂ O/cm ² |
| Latex Particle Challenge (Filtration Efficiency) @ 0.1 micron per ASTM F2299 | 97.8% | |



608 PD

PFL[®] Headband Masks

- 608 Blue
- 608 BS Blue Stripe
- 608 PD Purple Designer

300/case (6 boxes of 50)

- 9608 White
- Cleanroom packaging

300/case (6 bags of 50)



615 BS

PFL[®] Ear Loop Masks

- 615 Blue
- 615 BS Blue Stripe
- 615 PD Purple Designer
- 615 PK Pink Stripe

300/case (6 boxes of 50)



108

PFL[®] Headband Masks No Magic Arch[™]

- 108 Blue

300/case (6 boxes of 50)



115

PFL[®] Ear Loop Masks No Magic Arch[™]

- 115 Blue

300/case (6 boxes of 50)

Critical Cover[®] Protective Apparel & Accessories

PFL[®] Laser Masks

PFL[®] Technology and Laser Plume Protection

Features & Benefits: The PFL[®] Laser mask effectively filters plumes during laser surgery. The mask utilizes Positive Facial Lock[®] technology with an integrated Twist-Seal[®] chin piece in the facemask to give everyone in the operating room a custom fit each time. The PFL[®] design helps eliminate the potential of inhaling airborne contaminants while maintaining a comfortable seal to the user's face. The patented and integrated Magic Arch[™] technology prevents the mask from coming in contact with the user's nose and mouth thereby making it easier to breathe while enhancing filtration efficiency. These durable masks are made of hypoallergenic materials and have a smooth, soft interior for ultimate comfort.



638

PFL[®] Laser Masks

638 Gray Stripe,
Single Headband

210/case (6 boxes of 35)

| Performance | Test Performed | Result (Average) |
|--|---------------------------------------|---|
| | Differential Pressure per MIL-M36954C | 2.9 mm H ₂ O/cm ² |
| Latex Particle Challenge (Filtration Efficiency) @ 0.1 micron per ASTM F2299 | 99.3% | |

PFL[®] N-95 Particulate Respirator

NIOSH Approved Respirator

Features & Benefits: The Positive Facial Lock[®] (PFL[®]) N-95 Particulate Respirator meets the World Health Organization (WHO) and the Centers for Disease Control (CDC) recommended protection levels (where applicable) for many airborne contaminants. NIOSH Certified, our N-95 delivers the appropriate amount of filtration efficiency and when combined with a trio of patented and unique design

features, also delivers the user a comfortable, custom fitting facemask. The integrated Magic Arch[™] technology creates a breathing chamber within the facemask by holding it away from the user's nose and mouth. Our PFL technology, incorporating an integrated Twist Seal[®] chinpiece, helps the wearer create a perfect fit every time.



695

PFL[®] N95 Particulate Respirator

695 Teal Stripe

210/case (6 boxes of 35)

| Performance | Test Performed | Result (Average) |
|--|---------------------------------------|---|
| | Differential Pressure per MIL-M36954C | 5.8 mm H ₂ O/cm ² |
| Latex Particle Challenge (Filtration Efficiency) @ 0.1 micron per ASTM F2299 | 99.9% | |

Critical Cover[®] Protective Apparel & Accessories

CoolOne™ Masks w/Magic Arch™

Cool Design, Very Cool Comfort

Features & Benefits: Thanks to the patented Magic Arch™ support, CoolOne facemasks give users cooler, more comfortable performance than other designs currently on the market. The integrated Magic Arch™ support strip holds the mask away from the nose and mouth to create a larger breathing chamber to enhance user comfort. Choose from tie strings, ear loops or ear loops with an anti-fog application - for use in high humidity environments or with protective eyewear.



BL 6055

CoolOne™ Ear Loop Masks

BL 6055 Blue
GR 6055 Green
PK 6055 Pink
YL 6055 Yellow

500/case (10 boxes of 50)

CoolOne™ Anti-fog Ear Loop Masks

BL 6155 Blue
500/case (10 boxes of 50)



BL 6001

CoolOne™ Tie Mask

BL 6001 Blue

300/case (6 boxes of 50)

| Performance | Test Performed | Result (Average) |
|--|---------------------------------------|---|
| | Differential Pressure per MIL-M36954C | 1.8 mm H ₂ O/cm ² |
| Latex Particle Challenge (Filtration Efficiency) @ 0.1 micron per ASTM F2299 | 95.5% | |

CoolOne™ Sensitive Skin Masks w/Magic Arch™

For Sensitive Skin

Features & Benefits: If you have skin sensitivity, choose the CoolOne Sensitive Skin facemask. These facemasks are hypoallergenic and free of pigments and dyes. The patented Magic Arch[®] support strip holds the mask away from the nose and mouth to create a larger breathing chamber to enhance user comfort. For a secure and comfortable fit, soft knit ear loops are available along with an anti-fog version for use in high humidity environments or with protective eyewear.



WH 6155

CoolOne™ Sensitive Skin Ear Loop Mask

WH 1155 White

500/case (10 boxes of 50)

CoolOne™ Sensitive Skin Anti-Fog Ear Loop Mask

WH 6155 White

500/case (10 boxes of 50)

| Performance | Test Performed | Result (Average) |
|--|---------------------------------------|---|
| | Differential Pressure per MIL-M36954C | 1.8 mm H ₂ O/cm ² |
| Latex Particle Challenge (Filtration Efficiency) @ 0.1 micron per ASTM F2299 | 95.5% | |

Critical Cover[®] Protective Apparel & Accessories

AlphaAir[®] Masks

Particle Filtration to 0.1 Micron

Features & Benefits: The high value AlphaAir[®] facemasks are clean, comfortable and provide outstanding particle filtration down to 0.1 micron. The full-length aluminum nosepiece helps provide a perfect fit every time. The sonic welded design ensures maximum protection for the user. The AlphaAir[®] is available with either ear loops or tie strings.

| Performance | Test Performed | Result (Average) |
|--|---------------------------------------|---|
| | Differential Pressure per MIL-M36954C | 4.4 mm H ₂ O/cm ² |
| Latex Particle Challenge (Filtration Efficiency) @ 0.1 micron per ASTM F2299 | 93.5% | |



YL 5005

AlphaAir[®] Ear Loop Masks

BL 5005 Blue
 GR 5005 Green
 PK 5005 Pink
 YL 5005 Yellow

500/case (10 boxes of 50)



BL 5100

AlphaAir[®] Tie Mask

BL 5100 Blue
 300/case (6 boxes of 50)

ShieldMate[®] Mask w/Eye Shield

Double-Duty Protective Performance

Features & Benefits: Get both eye and face splash protection along with particulate filtration efficiency in this truly unique design. The ShieldMate, a combination facemask and eye shield, features a low glare, anti-fog coated, optically clear shield that is ultrasonically welded to the facemask. Additionally, an anti-fog foam strip on the top of the facemask significantly reduces the potential for eyewear fogging. The patented Magic Arch™ support strip holds the mask away from the nose and mouth creating a larger breathing chamber to enhance user comfort. This results in a cooler, more comfortable performance for the wearer. Comfortable tie strings and a full-length aluminum nosepiece properly secure the ShieldMate facemask to the user.



BL 8101S

ShieldMate[®] Mask w/Eye Shield

BL 8101S Blue
 100/case (4 boxes of 25)

| Performance | Test Performed | Result (Average) |
|--|---------------------------------------|---|
| | Differential Pressure per MIL-M36954C | 2.3 mm H ₂ O/cm ² |
| Latex Particle Challenge (Filtration Efficiency) @ 0.1 micron per ASTM F2299 | 97.8% | |

Critical Cover[®] Protective Apparel & Accessories

ShieldMate[®] Facemask w/Extended Shield

Wraparound Shield

Features & Benefits: This 100% polypropylene mask offers .1 micron filtration. Mask design features comfortable latex free ear loops and a full-length aluminum nosepiece. Low glare, optically clear, distortion-free shield is 5 mil thick. Wraparound shield has permanent anti-fog treatment on both sides.



SM 2005X

ShieldMate[®] Mask w/Extended Shield

SM 2005X Blue

100/case (4 boxes of 25)

| Performance | Test Performed | Result (Average) |
|--|---------------------------------------|---|
| | Differential Pressure per MIL-M36954C | 4.4 mm H ₂ O/cm ² |
| Latex Particle Challenge (Filtration Efficiency) @ 0.1 micron per ASTM F2299 | 93.5% | |

Coverall[®] Face Shields

High Performance Splash Protection

Features and Benefits: When you need total facial splash protection, choose the Coverall[®] face shield. The face shield's wrap-around design provides the wearer with great peripheral vision while acting as a protective shield against non-hazardous liquid splash and light particles in a Lab or Controlled Environment. The Coverall face shield is not ANSI Z87 rated for eye protection. You can wear the lightweight shield comfortably for long periods and it fits easily over prescription glasses or protective eyewear. A double-sided anti-fog coating

reduces the possibility of fogging in high humidity environments. For safe working conditions, the face shield is low distorting and 100% optically clear while a soft polyurethane foam headband securely positions the device on the wearer.

Available in two styles: Full face shield and half face shield. Also available with an adjustable Velcro[®] band or with our latex free elastic Comfort headband. Individually packaged.



2807

Coverall[®] Full Face Shields

2802 Full Face Shield w/Velcro[®] Adjustable Band

2807 Full Face Shield w/Comfort Band

100/case (4 boxes of 25)



2808

Coverall[®] Half Face Shields

2803 Half Face Shield w/Velcro[®] Adjustable Band

2808 Half Face Shield w/Comfort Band

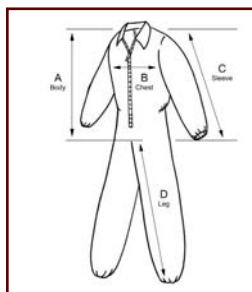
100/case (4 boxes of 25)

Critical Cover[®] Protective Apparel & Accessories

AlphaGuard[®] Garments

Perfect Balance of Protection and Comfort

Features & Benefits: AlphaGuard is the result of leading-edge technologies and brings to market a unique blend of physical properties that provides both the user and your production environment with a comfortable and efficient garment. AlphaGuard is a very breathable and comfortable material for the wearer while providing a high level of filtration efficiency for your environment. A low particle count adds another measure of environmental protection for your processes. AlphaGuard material is fluid repellent but not recommended for use with chemicals. The static dissipative material is recommended for those applications where electro-static dissipative (ESD) protection is required.



Coveralls

| White | Size | Blue |
|------------|------|------------|
| N/A | S | CV-84032-1 |
| CV-74032-2 | M | CV-84032-2 |
| CV-74032-3 | L | CV-84032-3 |
| CV-74032-4 | XL | CV-84032-4 |
| CV-74032-5 | 2X | CV-84032-5 |
| CV-74032-6 | 3X | CV-84032-6 |
| CV-74032-7 | 4X | CV-84032-7 |
| CV-74032-8 | 5X | CV-84032-8 |

Elastic wrist, ankle & back
25/case

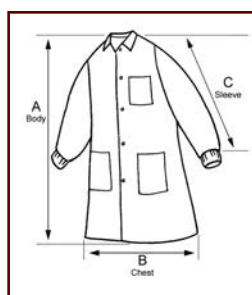
| Dimensions | Size | Body (A) | Chest (B) | Sleeve (C) | Leg (D) |
|------------|------|----------|-----------|------------|---------|
| | S | 36 1/2" | 23" | 32 1/2" | 28" |
| | M | 37 1/2" | 24 1/4" | 34" | 28 1/2" |
| | L | 38 3/4" | 25" | 34" | 29 1/2" |
| | XL | 40" | 27" | 36 1/2" | 30" |
| | 2X | 40 1/2" | 29 3/4" | 37" | 31" |
| | 3X | 43" | 32" | 38" | 32" |
| | 4X | 43" | 32 1/2" | 41" | 32 1/2" |
| | 5X | 43 1/2" | 33 1/2" | 42" | 33" |



Lab Coats - Knit Wrist

| White | Size | Blue |
|------------|------|------------|
| LC-32632-1 | S | LC-31632-1 |
| LC-32632-2 | M | LC-31632-2 |
| LC-32632-3 | L | LC-31632-3 |
| LC-32632-4 | XL | LC-31632-4 |
| LC-32632-5 | 2X | LC-31632-5 |
| LC-32632-6 | 3X | LC-31632-6 |
| LC-32632-9 | 4X | LC-31632-9 |

Tapered collar, knit wrist,
3 pockets, snap close
30/case



| Dimensions | Size | Body (A) | Chest (B) | Sleeve (C) |
|------------|---------|----------|-----------|------------|
| | S | 36 3/4" | 24 1/4" | 30" |
| | M | 39 1/2" | 25 1/4" | 30 1/4" |
| | L | 40" | 27" | 32 1/2" |
| | XL | 42 3/4" | 27 3/4" | 33" |
| | 2X | 43 1/2" | 29 1/2" | 37 1/2" |
| | 3X | 44 1/2" | 30 3/4" | 38 1/4" |
| 4X | 46 1/2" | 31 1/2" | 39 1/4" | |



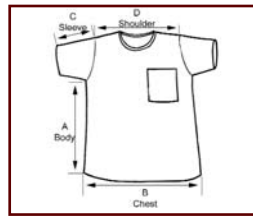
Critical Cover[®] Protective Apparel & Accessories

AlphaGuard[®] Garments

Scrub Shirts - Short Sleeve

| Blue | Size |
|------------|------|
| WS-23921-1 | S |
| WS-23921-2 | M |
| WS-23921-3 | L |
| WS-23921-4 | XL |
| WS-23921-5 | 2X |
| WS-23921-6 | 3X |
| WS-23921-7 | 4X |

Round neck, banded collar,
one pocket, safety stitched
30/case



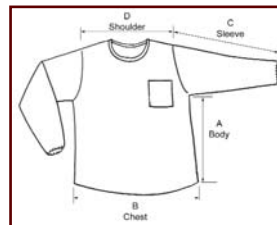
| Dimensions | Size | Body (A) | Chest (B) | Sleeve (C) | Shoulder (D) |
|------------|---------|----------|-----------|------------|--------------|
| | S | 17 1/2" | 22 1/2" | 6 1/2" | 17" |
| M | 17 3/4" | 24 1/2" | 6 3/4" | 18 1/4" | |
| L | 18" | 26 1/2" | 7 1/4" | 19 1/4" | |
| XL | 18 1/2" | 27 3/4" | 7 3/4" | 20 1/2" | |
| 2X | 18 3/4" | 28 1/2" | 8 3/4" | 22 1/4" | |
| 3X | 19" | 30" | 9 1/2" | 22 3/4" | |
| 4X | 19 1/2" | 31 3/4" | 9 3/4" | 24 1/2" | |



Scrub Shirts - Long Sleeve

| Blue | Size |
|------------|------|
| WS-23221-1 | S |
| WS-23221-2 | M |
| WS-23221-3 | L |
| WS-23221-4 | XL |
| WS-23221-5 | 2X |
| WS-23221-6 | 3X |
| WS-23221-7 | 4X |

Round neck, banded collar,
elastic wrist, one pocket,
safety stitched
30/case



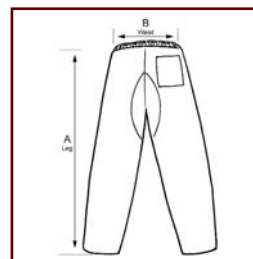
| Dimensions | Size | Body (A) | Chest (B) | Sleeve (C) | Shoulder (D) |
|------------|---------|----------|-----------|------------|--------------|
| | S | 17 1/2" | 22 1/2" | 20 1/2" | 17" |
| M | 17 3/4" | 24 1/2" | 21 1/2" | 18 1/4" | |
| L | 18" | 26 1/2" | 22 3/4" | 19 1/4" | |
| XL | 18 1/2" | 27 3/4" | 24 1/4" | 20 1/2" | |
| 2X | 18 3/4" | 28 1/2" | 25 3/4" | 22 1/4" | |
| 3X | 19" | 30" | 27" | 22 3/4" | |
| 4X | 19 1/2" | 31 3/4" | 28 1/2" | 24 1/2" | |



Scrub Pants

| Blue | Size |
|------------|------|
| WP-23322-1 | S |
| WP-23322-2 | M |
| WP-23322-3 | L |
| WP-23322-4 | XL |
| WP-23322-5 | 2X |
| WP-23322-6 | 3X |
| WP-23322-7 | 4X |

Spandex waist,
1 pocket, reinforced crotch,
safety stitched
30/case



| Dimensions | Size | Leg (A) | Waist Relaxed (B) | Waist Stretched (B) |
|------------|---------|---------|-------------------|---------------------|
| | S | 38" | 9 1/4" | 16 1/2" |
| M | 40 3/4" | 10 1/4" | 18 1/4" | |
| L | 43" | 12" | 21 1/2" | |
| XL | 45" | 12" | 21 1/2" | |
| 2X | 45" | 12 1/4" | 23 1/2" | |
| 3X | 46" | 14 1/4" | 25 1/4" | |
| 4X | 46 1/2" | 14 1/2" | 26" | |

Critical Cover[®] Protective Apparel & Accessories

GenPro[®] Garments

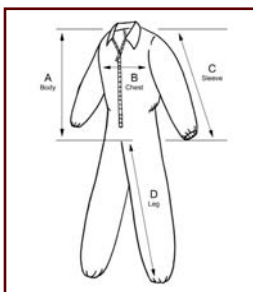
First Choice for Dry, Non-Hazardous Areas

Features & Benefits: Designed for non-hazardous, general purpose environments and with exceptional breathability and moderate barrier protection, GenPro garments are ideal for your personnel as well as for visitors to your facility. The lightweight, durable material lets you stay clean and comfortable all day while providing a limited barrier to particulates and contamination. It is the perfect solution for protecting your clothes while offering comfort and breathability.

Coveralls

| White | Size |
|------------|------|
| CV-14032-2 | M |
| CV-14032-3 | L |
| CV-14032-4 | XL |
| CV-14032-5 | 2X |
| CV-14032-6 | 3X |
| CV-14032-7 | 4X |
| CV-14032-8 | 5X |

Elastic wrist,
ankle & back
25/case



| Dimensions | Size | Body (A) | Chest (B) | Sleeve (C) | Leg (D) |
|------------|------|----------|-----------|------------|---------|
| | M | 37 1/2" | 24 1/4" | 34" | 28 1/2" |
| | L | 38 3/4" | 25" | 34" | 29 1/2" |
| | XL | 40" | 27" | 36 1/2" | 30" |
| | 2X | 40 1/2" | 29 3/4" | 37" | 31" |
| | 3X | 43" | 32" | 38" | 32" |
| | 4X | 43" | 32 1/2" | 41" | 32 1/2" |
| | 5X | 43 1/2" | 33 1/2" | 42" | 33" |



Lab Coats - Knit Wrist

| White | Size |
|------------|------|
| LC-12632-1 | S |
| LC-12632-2 | M |
| LC-12632-3 | L |
| LC-12632-4 | XL |
| LC-12632-5 | 2X |
| LC-12632-6 | 3X |

Tapered collar, knit wrist,
3 pockets, snap close
30/case



| Dimensions | Size | Body (A) | Chest (B) | Sleeve (C) |
|------------|------|----------|-----------|------------|
| | S | 36 3/4" | 24 1/4" | 30" |
| | M | 39 1/2" | 25 1/4" | 30 1/4" |
| | L | 40" | 27" | 32 1/2" |
| | XL | 42 3/4" | 27 3/4" | 33" |
| | 2X | 43 1/2" | 29 1/2" | 37 1/2" |
| | 3X | 44 1/2" | 30 3/4" | 38 1/4" |



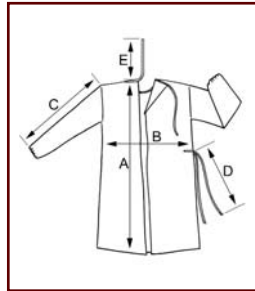
Critical Cover[®] Protective Apparel & Accessories

GenPro[®] Garments

Gowns

Yellow **Size**
 GN-13124-3 Univ
 GN-13124-4 XL

Full coverage,
 elastic wrist, banded ties
 at neck & waist
 50/case



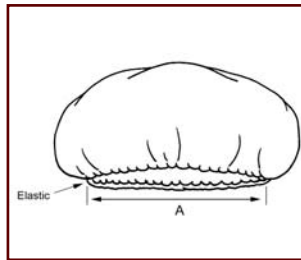
| Dimensions | Size | Body (A) | Chest (B) | Sleeve (C) | Waist Tie Length (D) | Neck Tie Length (E) |
|------------|-------|----------|-----------|------------|----------------------|---------------------|
| | Univ | 45" | 27" | 23" | 29 ½" | 11" |
| XL | 47 ¼" | 30" | 24 ¾" | 29 ½" | 11" | |



Bouffants

White **Size**
 BO-13821-B 21"
 BO-13824-B 24"
 BO-13826-B 26"

Lightweight,
 elastic band,
 latex-free
 1,000/case



| Dimensions | Size | Diameter (Relaxed) (A) | Diameter (Stretched) (A) |
|------------|------|------------------------|--------------------------|
| | 21" | 8" | 21" |
| 24" | 8 ½" | 24" | |
| 26" | 9" | 26" | |

Critical Cover[®] Protective Apparel & Accessories

AquaTrak[®] Boot Covers

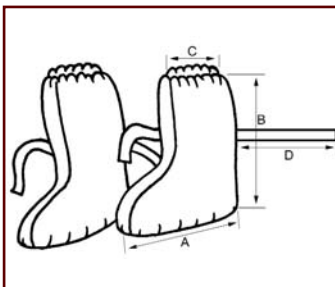
Superior Traction in Wet & Dry Conditions

Features & Benefits: Our ankle high AquaTrak[®] boot cover provide superior anti-skid properties in wet and dry conditions. A seamless sole design with sonic welded seams makes our ankle high boot cover impervious to liquids and provides appropriate particle holdout. AquaTrak material exhibits a low particle count and offers super protection against particles, biologicals, fluids and light chemical splash.

Sonic Welded Ankle High Boot Covers

| Blue | Size | Thread Colors |
|------------|------|---------------|
| BT-91412-B | Univ | White |
| BT-91413-B | XL | Black |

Sonic welded seams, serged seam elastic top, ankle ties
100 pair/case



| Dimensions | Size | Length (A) | Height (B) | Top Relaxed (C) | Top Stretched (C) | Tie Length (D) |
|------------|-------|------------|------------|-----------------|-------------------|----------------|
| | Univ. | 15 1/2" | 17" | 6" | 11 1/2" | 17" |
| XL | 16" | 18" | 6 1/2" | 12 1/2" | 17" | |

SureGrip[™] Shoe Covers

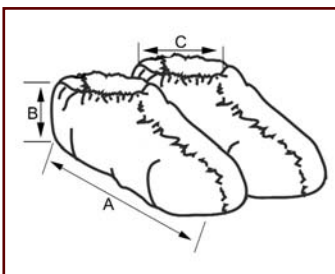
Inherently Non-Skid

Features & Benefits: Proven in the marketplace, our SureGrip[™] shoe covers have established themselves as the shoe cover of choice for a wide range of floor surfaces and in many different applications. Combining durability and cleanliness with outstanding anti-skid properties, SureGrip provides you with a blend of unmatched performance and overall value. Serged seams add extra strength, traction and is a snug fit for safety. Thread colors around the opening provide convenient size identification.

Serged Seams Shoe Covers

| Blue | Size | Thread Colors |
|------------|-------|---------------|
| SH-X1222-B | Univ. | White |
| SH-X1223-B | XL | Black |
| SH-X1224-B | 2X | Blue |

Non-conductive, serged seams
150 pair/case



| Dimensions | Size | Length (A) | Height (B) | Top Relaxed (C) | Top Stretched (C) |
|------------|---------|------------|------------|-----------------|-------------------|
| | Univ. | 15 1/2" | 6 1/4" | 4 1/2" | 9 1/2" |
| XL | 17" | 6 1/2" | 5" | 11 1/2" | |
| 2X | 18 1/2" | 6 3/4" | 5 1/2" | 12 1/2" | |

Critical Cover[®] Protective Apparel & Accessories

CPE Shoe Covers

Heat-Sealed, Seamless Construction

Features & Benefits: Our CPE film shoe covers are ideal for many applications where value and transition are required. Whether your new Controlled Environment is

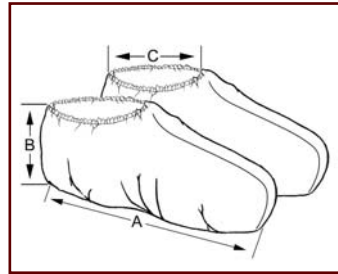
under construction or you need to temporarily utilize a shoe cover in the donning process or for movement within your facility, our CPE is the product of choice.

Heat Sealed Seams Shoe Covers

White **Size**
SH-G1253-B XL

Blue **Size**
SH-H1253-B XL

All film, fluid resistant,
seamless sole,
heat sealed seams
500 pair/case



| Dimensions | Size | Length (A) | Height (B) | Top Relaxed (C) | Top Stretched (C) |
|------------|------|------------|------------|-----------------|-------------------|
| | XL | 16" | 5 3/4" | 3 1/4" | 16" |

GenPro[®] Shoe Covers

Economy Shoe Cover Ideal for Visitor Use

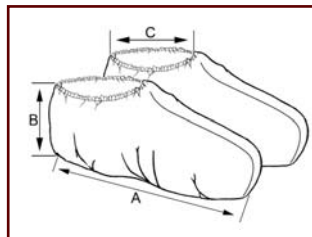
Features & Benefits: Have these lightweight, breathable GenPro[®] shoe covers available for visitor and other non-hazardous area uses. The non-conductive, anti-skid shoe covers provide a moderate barrier to fluids, particulates and contamination. This category of shoe covers are not appropriate for use in protecting employees from environmental risks or protecting controlled environments from employee contamination.

Shoe Covers Anti-Skid Heat Sealed Seams

Blue **Size**
SB41221-B Univ.
SB41222-B XL

White **Size**
SB51221-B Univ.
SB51222-B XL

Non-skid,
heat sealed seams
150 pair/case



| Dimensions | Size | Length (A) | Height (B) | Top (Relaxed) (C) | Top (Stretched) (C) |
|------------|------|------------|------------|-------------------|---------------------|
| | Univ | 15" | 7 1/2" | 5" | 10" |
| XL | 17" | 7 1/2" | 5" | 11 1/2" | |

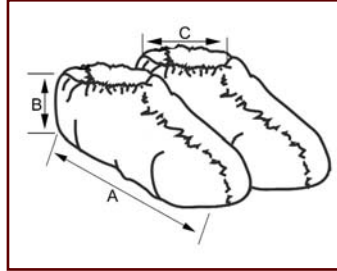
Critical Cover[®] Protective Apparel & Accessories

GenPro[®] Shoe Covers

Shoe Covers Serged Seams

| Blue | Size | Thread Color |
|------------|------|--------------|
| SH-61222-B | Univ | White |
| SH-61223-B | XL | Black |

Elastic inside,
serged seams
150 pair/case



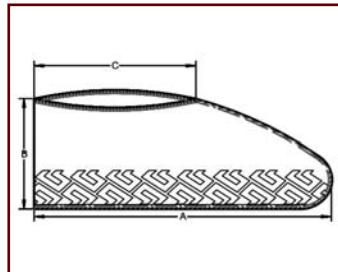
| Dimensions | Size | Length (A) | Height (B) | Top (Relaxed) (C) | Top (Stretched) (C) |
|------------|---------|------------|------------|-------------------|---------------------|
| | Univ | 15 3/4" | 7" | 4 1/2" | 10 3/4" |
| XL | 17 1/2" | 7" | 5" | 12" | |

Shoe Covers Anti-Skid

| Blue | Size | Thread Color |
|------------|------|--------------|
| SH-71222-B | Univ | White |
| SH-71223-B | XL | Black |

Anti-skid adhesive on sole,
serged seams
150 pair/case

* These shoe covers contain natural latex rubber.



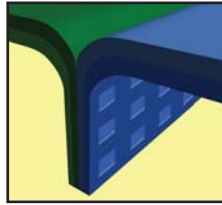
| Dimensions | Size | Length (A) | Height (B) | Top (Relaxed) (C) | Top (Stretched) (C) |
|------------|---------|------------|------------|-------------------|---------------------|
| | Univ | 15 3/4" | 7" | 4 1/2" | 10 3/4" |
| XL | 17 1/2" | 7" | 5" | 12" | |

Critical Cover[®] Protective Apparel & Accessories

Seam Construction

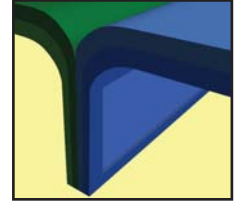
Ultrasonically Welded Seams

There are no thread or needle holes with this seam. The material is welded together creating a superior particle and fluid barrier



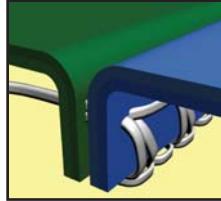
Heat Sealed Seams

This strong, impervious seam is used when ultrasonic welding is incompatible with the garment material. Used in shoe cover production.



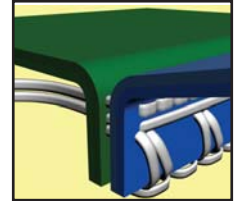
Serged Seams

This seam is produced when the threads are interlocked around the material edges for a strong stress-resistant seam.



Safety Stitched Seams

An extra safety stitch is added above the serged seam to offer added strength, durability and protection.



Apparel Packaging Perfection

Designed to Limit Contamination Entering Your Environment

- Packaged in a primary vacuum heat sealed bag, carton liner and outer corrugated carton to prevent cross contamination and contamination migration from one environment to another.
- All garments are precision folded and stacked within the primary bag to permit efficient storage with or without bins.
- All open seams on shipping containers are tape sealed to further prevent contamination.
- Four-sided carton labeling allows easy identification and inventory management.



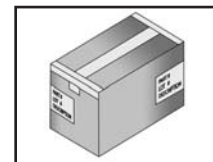
Primary Bag,
heat sealed



Carton Liner



Open carton with
taped down liner

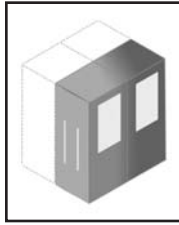


Sealed carton with
two corner labels

Critical Cover[®] Protective Apparel & Accessories

Facemask Packaging Perfection

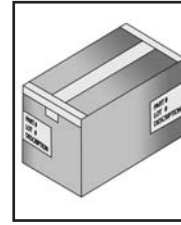
Dispenser Box Packaging



Dispenser Boxes



Dispenser boxes in carton



Carton taped sealed

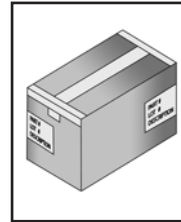
Cleanroom Packaging



Masks in heat-sealed bag

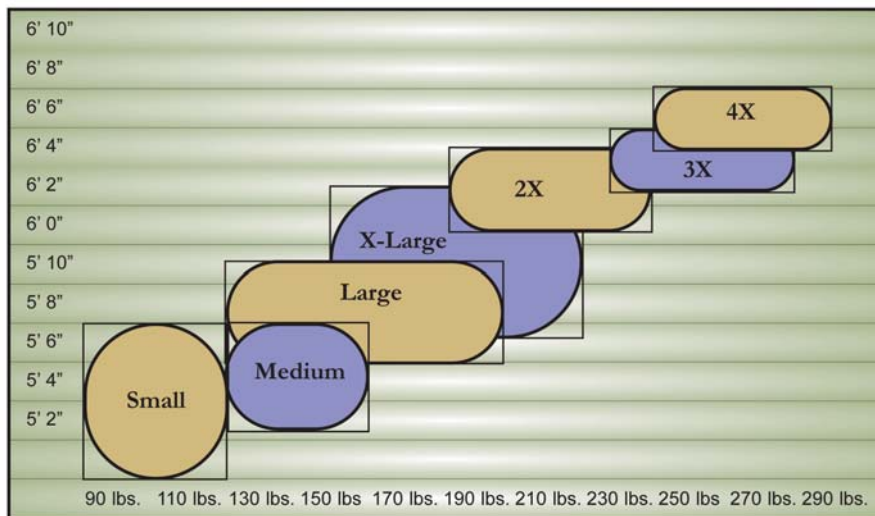


Mask bags in carton liner with carton



Carton taped sealed

Sizing Chart



Please contact us for other sizing

Critical Cover[®] Protective Apparel & Accessories

Physical Properties

| Standard Applied | Test Method | AlphaGuard [®] | AquaTrak [®] | SureGrip [™] |
|--|--|---|---|---|
| Ball Burst Strength | ASTM D3787 (Puncture Strength) | Average 14 lbs | Average 23 lbs | Average 30 lbs |
| BFE (Bacterial Filtration Efficiency) | MIL-M-36954C | 84.00% | 99.90% | 99.90% |
| COF (Coefficient of Friction) | ASTM D1894 (Film to Metal Test) | N/T | Static 0.619 Kinetic 0.607 | Static 0.700 Kinetic 0.795 |
| Delta P (Differential Pressure) | MIL-M-36954C | mm H ₂ O/cm ² 1.70 | mm H ₂ O/cm ² >119 | mm H ₂ O/cm ² >119 |
| ESD (Electrostatic Decay Rate) | Fed. Std. 101C Method 4046 ASTM D257 | Pass | N/T | N/T |
| Grab Tensile Properties | ASTM D751 MD-Tensile Strength TD-Tensile Strength | Average 16 lbs 27 lbs | Average 28 lbs 40 lbs | Average 26 lbs 30 lbs |
| Helmke Drum | IEST-RP-CC003.3 | Category II | Category I | Category I |
| Hydrostatic Resistance | ASTM D751 | N/T | 20 psi | N/T |
| Mass/Unit Area | ASTM D751 | Average 1.46 oz/sq yd | Average 1.77 oz/sq yd | Average 1.46 oz/sq yd |
| Mullen Burst Strength | ASTM D3786 | 144 psi | 146 psi | 67 psi |
| Puncture Propagation Tear Resistance | ASTM D2582 MD-Tensile Strength TD-Tensile Strength | Average 7 lbs 11 lbs | Average 10 lbs 9 lbs | Average 6 lbs 4 lbs |
| Trapezoid Tearing Strength | ASTM D4533 MD-Tensile Strength TD-Tensile Strength | Average 11 lbs 7 lbs | Average 12 lbs 17 lbs | Average 12 lbs 12 lbs |
| Water Resistance Impact Penetration | AATCC Method 42 | Penetration Seen | No Visible Penetration | No Visible Penetration |
| Water Vapor Transmission | ASTM E96 | Average 1.328 oz/yd ² /hr | Average 0.017 oz/yd ² /hr | Average 0.021 oz/yd ² /hr |

MD - Machine Direction TD - Transverse Direction NT - Not Tested

Critical Cover[®] Protective Apparel & Accessories

WARNING: These garments and associated materials are not suitable for use in some environments containing certain chemicals and/or hazardous agents. It is the responsibility of the user to determine the level of risk in a particular environment and the proper personal protection equipment needed. Garments manufactured from synthetic non-woven material may generate static electricity. Garments that contain an anti-stat treatment are not intended to be used as a safety feature. These garments are not recommended to be used in a flammable and/or explosive environment. If you have any questions, contact your distributor or Alpha Pro Tech for garment/fabric safety data. The use of this product is out of Alpha Pro Tech's control. Therefore, Alpha Pro Tech makes no warranties, expressed or implied, and assumes no liability as to the performance of these products for a particular use. **CAUTION: AVOID HEAT AND/OR OPEN FLAME.**

UCC Limited Warranty and Exclusions

Limited Warranty; Disclaimer and Limitation of Remedies: The products shall be free from defects in material and workmanship. ALPHA PRO TECH HEREBY EXPRESSLY DISCLAIMS ALL WARRANTIES, EITHER EXPRESSED OR IMPLIED, INCLUDING ANY IMPLIED WARRANTY OF MERCHANTABILITY OR FITNESS FOR A PARTICULAR PURPOSE. Buyer's remedy is expressly limited to replacement of any defective product and Alpha Pro Tech shall have no responsibility for any incidental or consequential damages. Any claims under this warranty must be made in writing to Alpha Pro Tech and must be made with 90 days of the purchase.

Alpha Pro Tech, Inc. reserves the right to change any prices, terms and conditions of sale at any time without any notice.



AlphaAir, AlphaGuard, AquaTrak, CoolOne, Coverall, Critical Cover, GenPro, Magic Arch, PFL, Positive Facial Lock, ShieldMate, SureGrip and Twist-Seal are registered trademarks of Alpha Pro Tech, Inc

**Alpha Pro Tech is committed to protecting people,
products, manufacturing and healthcare environments to
optimize process effectiveness and customer profitability.**

Ordering Information: To place an order, receive a sample or obtain more information,
please contact our Customer Service Department toll-free from
9:00 a.m. to 5:00 p.m. Eastern Time at:

Phone: 800-749-1363

Fax: 905-479-8703

E-mail: sales@alphaprotech.com

International customers please use the following contact information:

Phone: 520-281-0127 Ext. 201

Fax: 520-281-0235

E-mail: ccrespo@alphaprotech.com

Visit us at: www.alphaprotech.com

Critical Cover[®]

AlphaProTech
INCORPORATED